

**APPENDIX A**  
**MIDDLE SMITHFIELD TOWNSHIP ZONING MAP**  
 OF  
**2010 - A**  
 MONROE COUNTY, PENNSYLVANIA

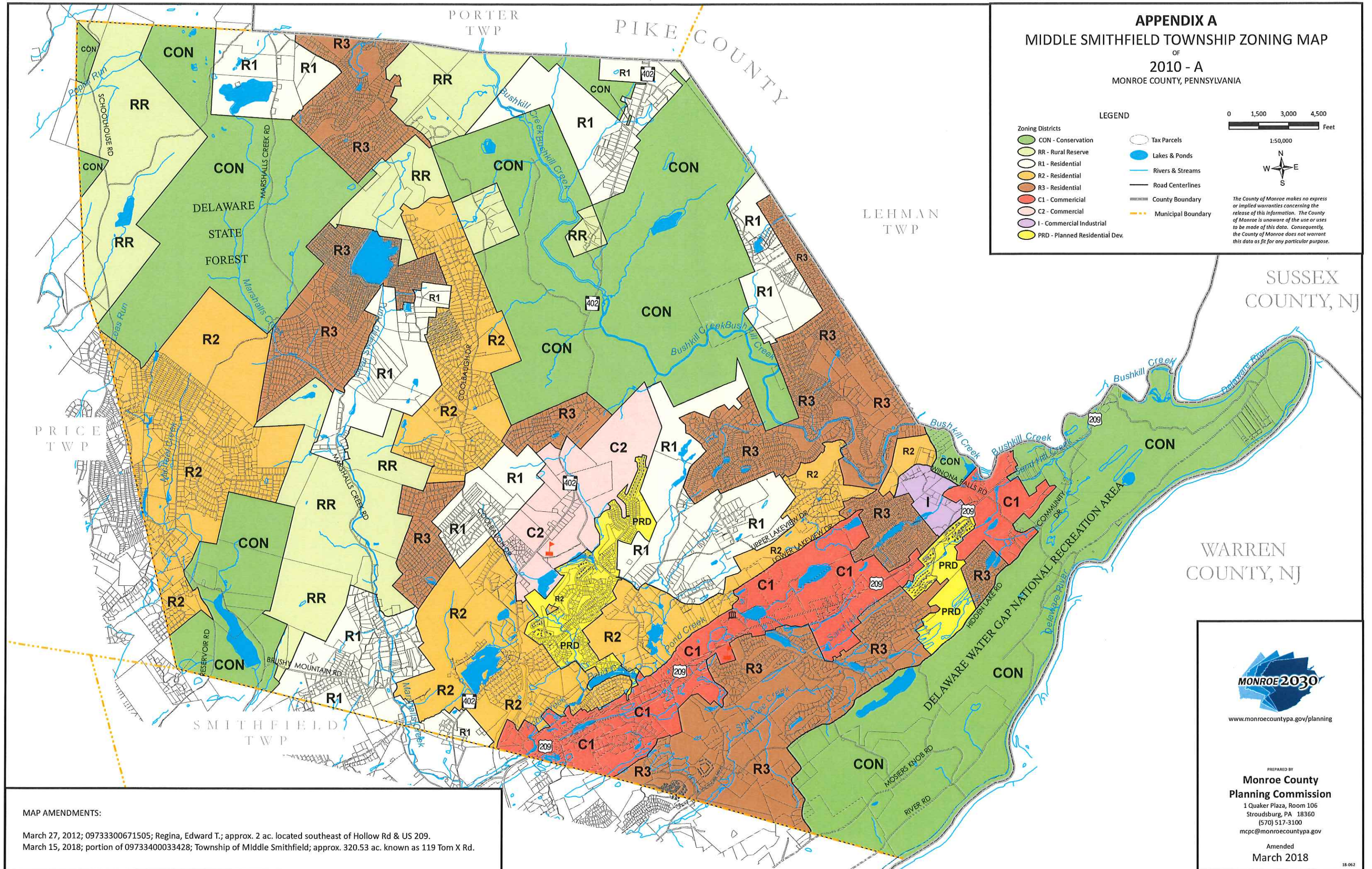
**LEGEND**

CON - Conservation	Tax Parcels
RR - Rural Reserve	Lakes & Ponds
R1 - Residential	Rivers & Streams
R2 - Residential	Road Centerlines
R3 - Residential	County Boundary
C1 - Commercial	Municipal Boundary
C2 - Commercial	
I - Commercial Industrial	
PRD - Planned Residential Dev.	

0 1,500 3,000 4,500 Feet  
 1:50,000

N  
 W E  
 S

*The County of Monroe makes no express or implied warranties concerning the release of this information. The County of Monroe is unaware of the use or uses to be made of this data. Consequently, the County of Monroe does not warrant this data as fit for any particular purpose.*



**MAP AMENDMENTS:**  
 March 27, 2012; 09733300671505; Regina, Edward T.; approx. 2 ac. located southeast of Hollow Rd & US 209.  
 March 15, 2018; portion of 09733400033428; Township of Middle Smithfield; approx. 320.53 ac. known as 119 Tom X Rd.



[www.monroecountypa.gov/planning](http://www.monroecountypa.gov/planning)

PREPARED BY  
**Monroe County**  
**Planning Commission**  
 1 Quaker Plaza, Room 106  
 Stroudsburg, PA 18360  
 (570) 517-3100  
[mcpc@monroecountypa.gov](mailto:mcpc@monroecountypa.gov)

Amended  
 March 2018