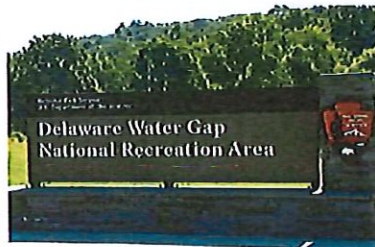
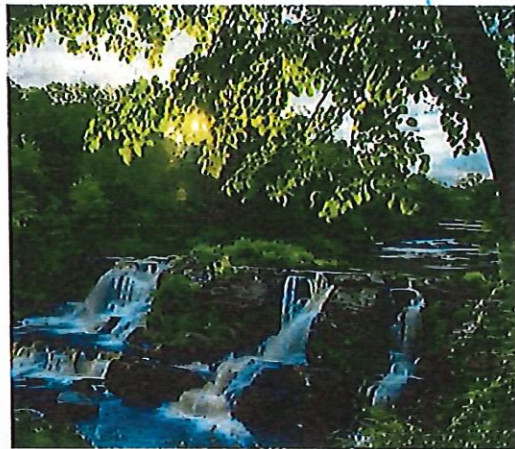
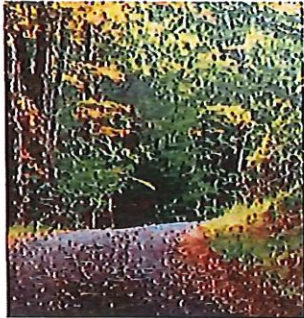


MIDDLE SMITHFIELD TOWNSHIP

COMPREHENSIVE PLAN UPDATE 2022 (#2)

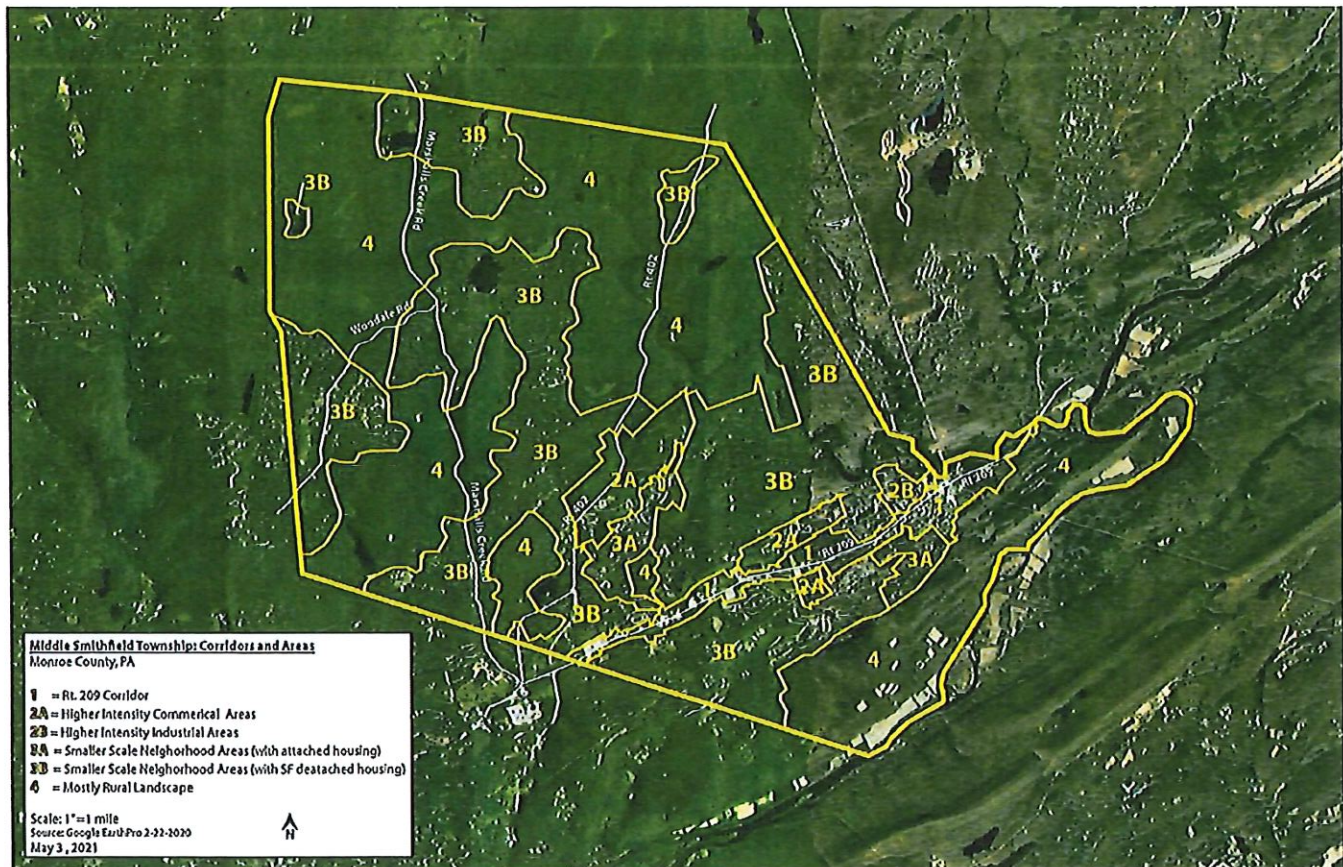


THIRD DRAFT: JUNE 30, 2022

COMPREHENSIVE PLAN UPDATE: 2022 (#2)

MIDDLE SMITHFIELD TOWNSHIP - MONROE COUNTY, PENNSYLVANIA

Middle Smithfield Township: Corridors & Areas Map



This Corridors & Areas Map is introduced in Chapter 1, and addressed in more detail in Chapter 3

ACKNOWLEDGMENTS

Board of Supervisors

Annette Atkinson, Chairperson
Mark Oney, Vice Chairperson
Michael J. Dwyer, Supervisor

Planning Commission

Robert Early, Chairman
Parin Shah, Vice Chairman
Wayne Bolt, Member
Nick Theofilos, Member
Mark Oney, Member
Carrie Wetherbee, Alternate

Comprehensive Plan Steering Committee

Mark Oney, Board of Supervisors & Planning Commission
Bob Early, Planning Commission
Nick Theofilos, Planning Commission
Parin Shah, Planning Commission
Wayne Bolt, Planning Commission
Ed Regina, Economic Development Advisory Committee
Carrie Wetherbee, Planning Commission

Township Staff

Michele Clewell, Township Secretary
Vicki Smith, Zoning Clerk & Recording Secretary

Township Solicitor

Patrick M. Armstrong, Esq.
Grim, Biehn & Thatcher

Township Planning Consultants

Thomas Comitta Associates, Inc.
Town Planners & Landscape Architects
Thomas J. Comitta, AICP, CNU-A, RLA
Jennifer Leister Reitz, AICP, LEED AP
Erin L. Gross, AICP, RLA

TABLE OF CONTENTS

Chapter 1 - Introduction

Introduction	1.0.
Survey	1.5.
Goals, Affirmations, and Aspirations	1.7.

Chapter 2 - Demographics

Introduction	2.0.
Demographic Overview	2.1.
Population Trends and Projections	2.2.
Housing and Housing Unit Projections	2.4.

Chapter 3 - Considerations for Future Land Use & Development Practices in Predominate "Corridor & Areas"

Introduction	3.0.
Zone 1 Route 209 Corridor	3.1.
Zone 2A Moderate Intensity Commercial Areas	3.8.
Zone 2B Higher Intensity Industrial Areas	3.15.
Zone 3A Smaller Scale Neighborhood Areas (with mixed housing)	3.22.
Zone 3B Larger Scale Neighborhood Areas (with single family detached & attached housing)	3.29.
Zone 4 Mostly Rural Landscape	3.36.

Chapter 4 - Implementation

Overview & Summary	4.0.
Implementation Matrix: Overall Recommendations	4.1.
Implementation Matrix: Corridor & Area - 1	4.2.
Implementation Matrix: Corridor & Area - 2A	4.7.
Implementation Matrix: Corridor & Area - 2B	4.11.
Implementation Matrix: Corridor & Area - 3A	4.14.
Implementation Matrix: Corridor & Area - 3B	4.18.
Implementation Matrix: Corridor & Area - 4	4.21.

Appendix A - Community Survey

Community Survey and Summary	A.2.-A.7
Open Ended Response Summary to Community Survey Question 19	A.8.
Open Ended Response Summary to Community Survey Question 20	A.9.
Open Ended Response Summary to Community Survey Question 21	A.9.

Appendix B - Comprehensive Plan 2007 Excerpts

Chapter 4. A Plan for Land Use	
B. Natural Resources	B.2.
G. Historic Resources	B.4.
Chapter 6. A Plan for Community Facilities	
A. Community Facilities	B.9.
B. Parks & Recreational Facilities	B.14.
Chapter 7. A Plan for Utilities	B.21.
Chapter 8. A Plan for Transportation & Circulation	B.30.

Appendix C

Resolution for Comprehensive Plan Adoption	C.1.
--	------

TABLE OF CONTENTS

List of Maps

Map 1. Existing Zoning Districts	1.0.
Map 2. Consolidated Zoning Districts & Intensities	1.1.
Map 3. Corridors & Areas	1.2.

Appendix B

Map 4-1: Natural Resources Protection Areas	B.3.
Map 4-4: Historic Resources	B.6.
Map 6-1: EMS Coverage	B.19.
Map 7-1: Community Facilities & Utilities	B.20.
Map 7-2: MS4 Pollution Reduction - Land Use Map	B.27.
Map 7-3: MS4 Pollution Reduction - Planning Area	B.28.
Map 7-4: MS4 Pollution Reduction - Land Use Map	B.29.
Map 8-1: Transportation Plan	B.38.

List of Tables

Table 1. Historic Growth Rates in Middle Smithfield Township and Monroe County	2.2.
---	------

Appendix B

Table 4-4: Historic Sites & Structures Listed on the Natural Register of Historic Places	B.4.
Table 4-5: Historic Sites & Structures Eligible for National Register of Historic Places	B.5.
Table 4-6: Locally Important Historic Sites & Structures	B.5.

List of Charts

Chart 1. Population Trends, 2010-2019	2.2.
Chart 2. Monroe County Historic and Projected Growth	2.3.
Chart 3. Middle Smithfield Population Projections, 2020-2040	2.3.
Chart 4. Housing Types	2.4.
Chart 5. Housing Tenure	2.4.
Chart 6. Housing Occupancy	2.4.
Chart 7. Implementation Matrix: Overall Recommendations	4.1.
Chart 8. Implementation Matrix: Corridor & Area - 1	4.2.
Chart 9. Implementation Matrix: Corridor & Area - 2A	4.7.
Chart 10. Implementation Matrix: Corridor & Area - 2B	4.11.
Chart 11. Implementation Matrix: Corridor & Area - 3A	4.14.
Chart 12. Implementation Matrix: Corridor & Area - 3B	4.18.
Chart 13. Implementation Matrix: Corridor & Area - 4	4.21.