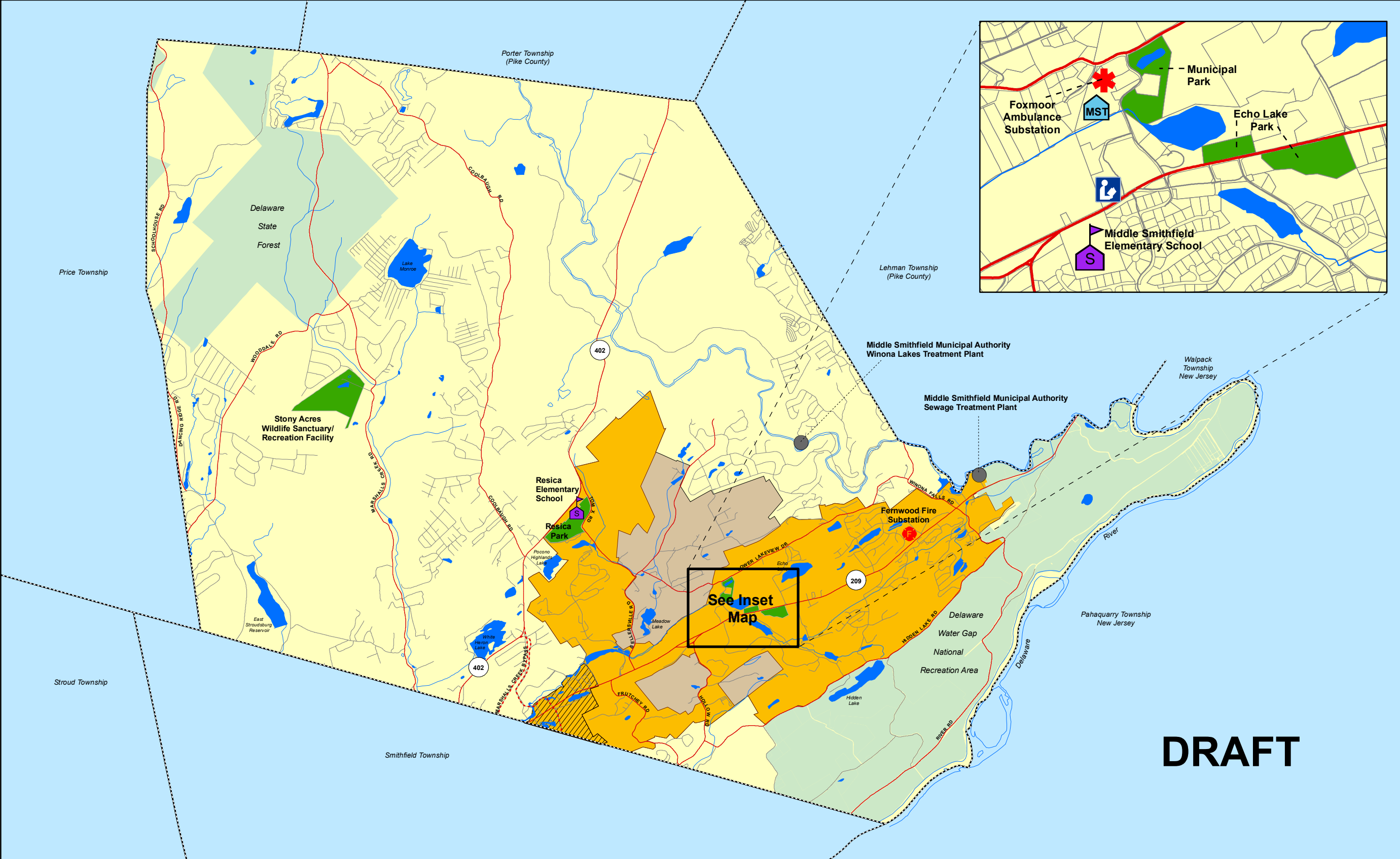
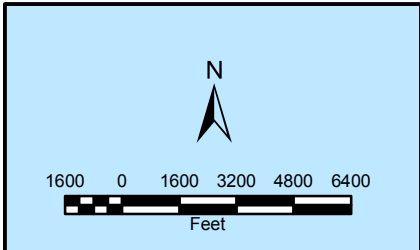


Map 7-1: Community Facilities & Utilities



**Middle Smithfield Township
Comprehensive Plan
Update**

Monroe County, Pennsylvania



Data Sources:
Base Features - Monroe County
Planning Commission, September 2006
Community Facilities - Consultant's
Analysis, 2007

Prepared By:
Thomas Comitta Associates, Inc.
Town Planners & Landscape Architects
18 West Chestnut Street
West Chester, Pennsylvania 19380
April 23, 2007; May 7, 2007; June 5, 2007;
August 29, 2007

Legend	
	Municipal Building
	School
	Public Library
	Park
	Ambulance Substation
	Fire Substation
	Sewage Treatment Plant
	Areas Removed from Sewer Service Area
	Sewer Service Area
	2007 Sewer Extension