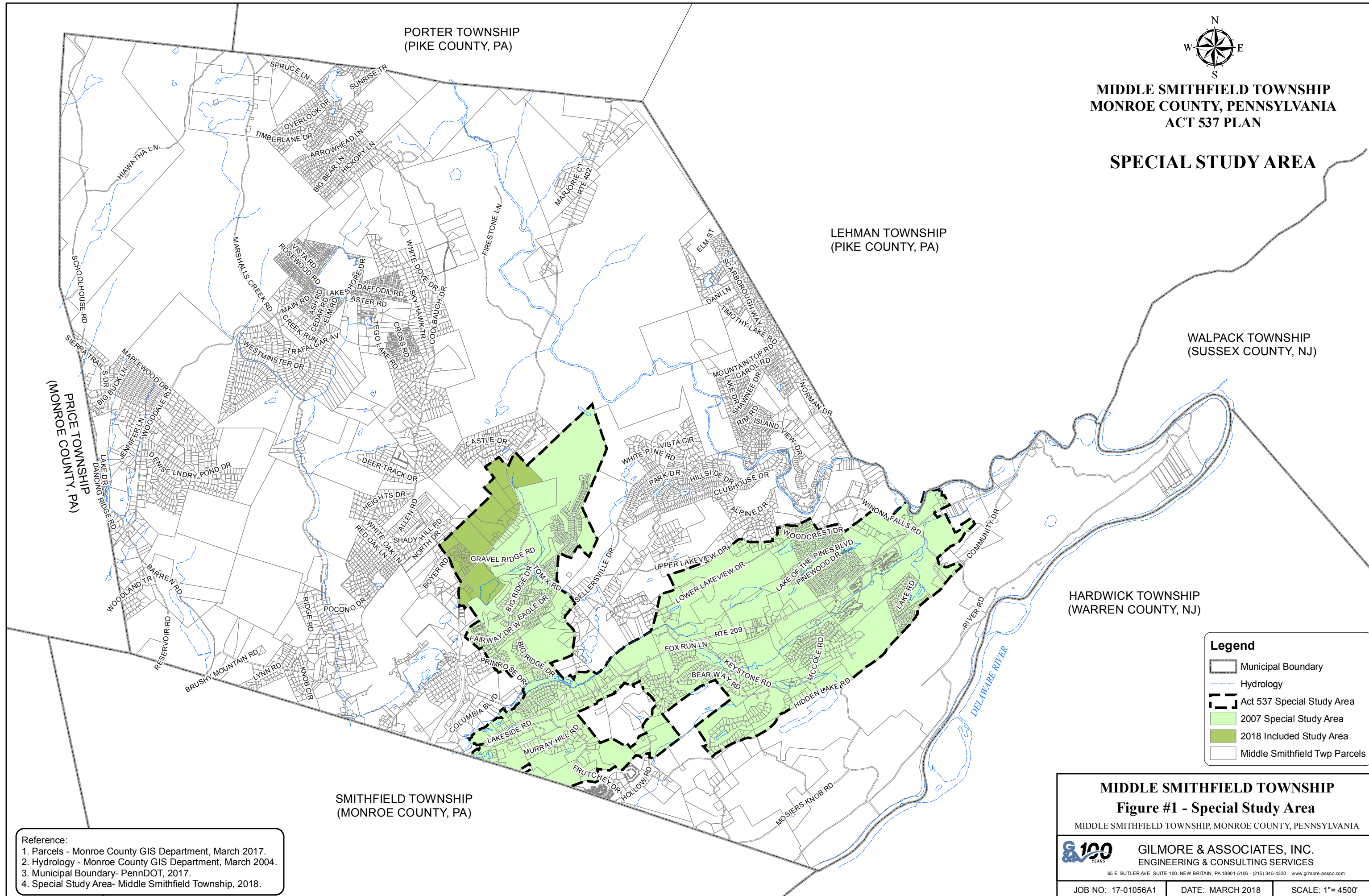


MIDDLE SMITHFIELD TOWNSHIP  
MONROE COUNTY, PENNSYLVANIA  
ACT 537 PLAN

SPECIAL STUDY AREA



LEHMAN TOWNSHIP  
(PIKE COUNTY, PA)

WALPACK TOWNSHIP  
(SUSSEX COUNTY, NJ)

HARDWICK TOWNSHIP  
(WARREN COUNTY, NJ)

SMITHFIELD TOWNSHIP  
(MONROE COUNTY, PA)

PRICE TOWNSHIP  
(MONROE COUNTY, PA)

**Legend**

- Municipal Boundary
- Hydrology
- Act 537 Special Study Area
- 2007 Special Study Area
- 2018 Included Study Area
- Middle Smithfield Twp Parcels

- Reference:
1. Parcels - Monroe County GIS Department, March 2017.
  2. Hydrology - Monroe County GIS Department, March 2004.
  3. Municipal Boundary- PennDOT, 2017.
  4. Special Study Area- Middle Smithfield Township, 2018.

**MIDDLE SMITHFIELD TOWNSHIP**  
**Figure #1 - Special Study Area**  
MIDDLE SMITHFIELD TOWNSHIP, MONROE COUNTY, PENNSYLVANIA

**GILMORE & ASSOCIATES, INC.**  
ENGINEERING & CONSULTING SERVICES  
65 E. BUTLER AVE. SUITE 100, NEW BRITAIN, PA 18901-5106 - (215) 345-4330 www.gilmore-assoc.com

JOB NO: 17-01056A1      DATE: MARCH 2018      SCALE: 1"= 4500'